

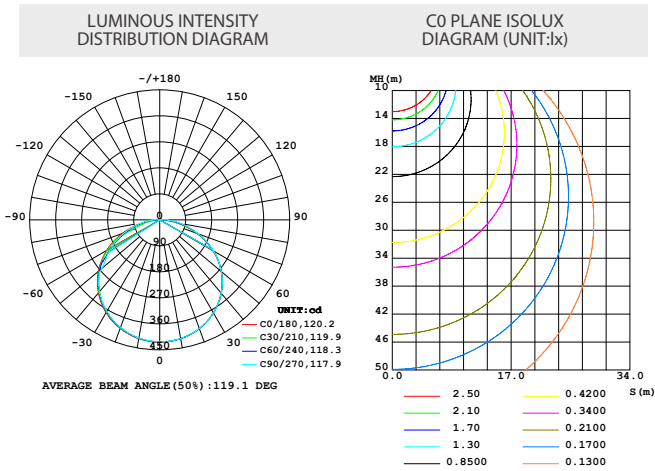


- High CRI; CRI>80.
- High Efficiency, Up to 100lm/w.
- High color consistency

TECHNICAL DETAILS

Power	24W/M
Voltage	DC24V
CRI	80
Led Qty	96LEDs/M
Length/Reel	5M
Working Temperature	-20~50°C
Storage Temperature	-30~80°C

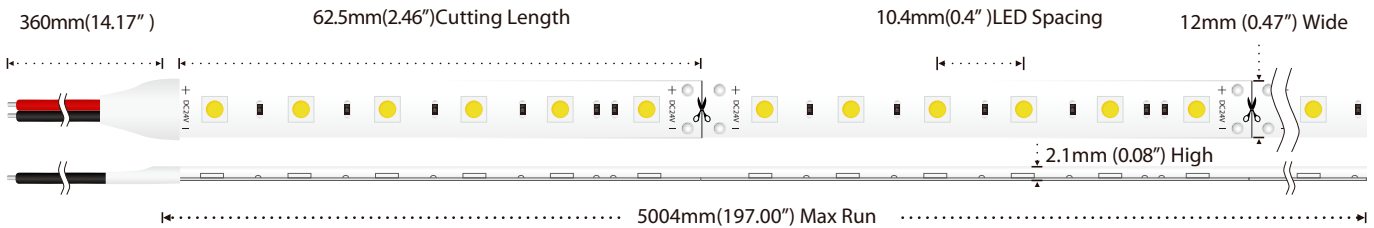
LIGHT DISTRIBUTION



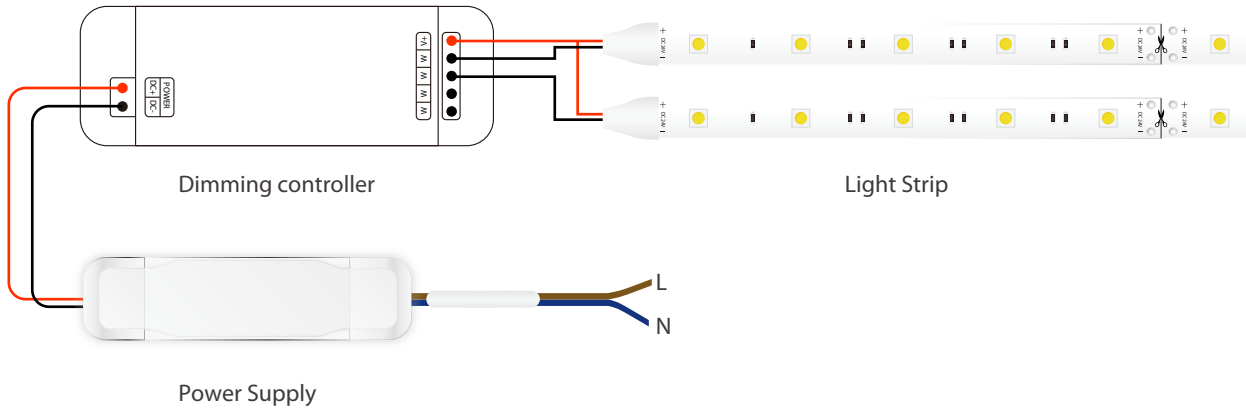
LUMENS PER METER

Product No.	FSIL.5050.2720.9624	
Color Temperature	2700K	2320lm
Product No.	FSIL.5050.4020.9624	
Color Temperature	4000K - 4500K	2415lm

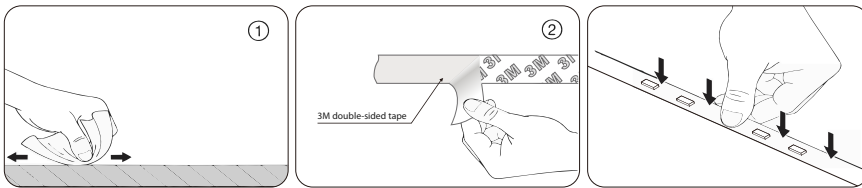
DIMENSION



POWER CONNECTION DIAGRAM



INSTALL



Clean the environment part to be attached with a cloth, as shown in Figure 1, and then tear off the 3M tape on the back of the light belt, and finally stick the light belt on the clean place.

*Please refer to the installation manual for details

PACKING

Box dimension(mm)	Carton dimension(mm)	Electrostatic size(mm)	Reel size(mm)	outer box(bags/carton)
500×260×380	360×240×240	240×220	7×12	50
Net weight (kg)	Each box net(kg)	Gross weight of each box(kg)	Bag quantity(bags/carton)	
0.12	5	7.3	25	

